


**SPECIFICATION**

<b>Series / Model</b>	FT-618L-NSRI Series
<b>Counter settings &amp; feeder</b>	Multi-mode
<b>Displaying number</b>	Yes
<b>Screws feeder control</b>	Automatic by PLC / Manual
<b>Supported screw diameter (mm)</b>	1.0-5.0mm (Can be adjusted)
<b>Support screw length</b>	≤ 15mm
<b>Screw Capacity</b>	M1: 3000pcs   M2: 2000pcs   M3: 1500pcs   M4: 1000pcs   M5:
<b>Screw speed</b>	2/s
<b>Input Voltage Adaptor</b>	AC100-240V 50/60Hz
<b>Power</b>	DC15V 4A
<b>Power Consumption</b>	~ 60W
<b>Dimensions (Length x Width x Height)</b>	265 x 165 x 185 mm
<b>Gross Weight</b>	~ 4.5Kg
<b>Shell Material</b>	Heat-resistant steel

**MODEL AND SCREW SUPPORT**

Model	Supported screw diameter (mm)	Supported screw nut diameter (mm)	Screw thickness (mm)	Screw length (mm)	Rotary diameter (mm)
FT-618L-NSRI-10	M1.0	1.2-9	>0.35	1.6-10	M1.0
FT-618L-NSRI-12	M1.2	1.4-9		1.8-10	M1.2
FT-618L-NSRI-14	M1.4	1.6-9		2.0-15	M1.4
FT-618L-NSRI-17	M1.7	1.9-9		2.3-15	M1.7
FT-618L-NSRI-18	M1.8	2.0-9		2.4-15	M1.8
FT-618L-NSRI-20	M2.0	2.2-9		2.6-15	M2.0
FT-618L-NSRI-23	M2.3	2.5-9		2.9-15	M2.3
FT-618L-NSRI-25	M2.5	2.7-9		3.1-15	M2.5
FT-618L-NSRI-26	M2.6	2.8-9		3.2-15	M2.6
FT-618L-NSRI-30	M3.0	3.2-9		3.6-15	M3.0
FT-618L-NSRI-40	M4.0	4.2-9		4.8-15	M4.0
FT-618L-NSRI-50	M5.0	5.2-9		5.8-15	M5.0

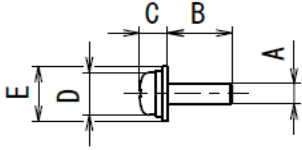
**Distributor in Vietnam**

Antek Vietnam Technology Co.,Ltd

 Website: [www.antek.vn](http://www.antek.vn) | Email: [sales@antek.vn](mailto:sales@antek.vn) | Hotline: 0843 318 318

## Reference table of the specified screws

\* Within the range of the screw sizes and lengths below, there may be unique screw shapes or structures that may not be compatible with the feeder unit. If you use a tapping screw with a sharp point or a rough pitch, the wear may be severe. It is desirable that the B dimension is larger than the D and E dimensions.



Reference table of the specified screws							Shape of screw head						
Screw feeder series	Screw size	Screw shaft diameter A(φ)	Screw shaft length B(mm)	Screw head thickness C(mm)	Screw head diameter D(φ)	Washer diameter E(φ)	No. 0 pan head	Pan head	Pan head			bind	Counter sunk head
									Sems	Double sems	Washer head		
NSB NSR NSBI NSRI	φ1.0	0.9~0.95	1.6~10	0.35~1.0	1.8~4.5	-	○						
	φ1.2	1.1~1.15	1.9~10	0.35~1.0	1.8~4.5	-	○						
	φ1.4	1.3~1.4	2.2~10	0.35~1.0	2.0~4.5	-	○						
	φ1.7	1.6~1.7	2.7~10	0.35~1.0	2.5~4.5	-	○						
	φ2.0	1.9~2.1	3.2~20	0.35~4.5	3.0~6.0	3.0~9		○	○	○	○	○	○
	φ2.3	2.2~2.4	3.7~20	0.35~4.5	3.3~6.0	3.3~9		○	○	○	○	○	○
	φ2.6	2.5~2.7	4.2~20	0.35~4.5	3.6~6.0	3.6~9		○	○	○	○	○	○
φ3.0	2.9~3.1	4.8~20	0.35~4.5	4.0~6.0	4.0~9		○	○	○	○	○	○	

\* Compatible with washer thickness 0.35 to 1.0mm.

Reference table of the specified screws							Shape of screw head				
Screw feeder series	Screw size	Screw shaft diameter A(φ)	Screw shaft length B(mm)	Screw head thickness C(mm)	Screw head diameter D(φ)	Washer diameter E(φ)	Pan head	Pan head			bind
								Sems	Double sems	Washer head	
OM-26M OM-26R	φ2.0	1.9~2.1	3.2~25	0.35~6	3.0~6.0	3.0~10	○	○	○	○	○
	φ2.3	2.2~2.4	3.7~25	0.35~6	3.3~6.0	3.3~10	○	○	○	○	○
	φ2.6	2.5~2.7	4.2~25	0.35~6	3.6~6.0	3.6~10	○	○	○	○	○
	φ3.0	2.9~3.2	4.8~25	0.35~6	4.0~6.0	4.0~11	○	○	○	○	○
	φ3.5	3.4~3.7	5.6~25	0.35~6.5	4.8~8.0	4.8~11	○	○	○	○	○
	φ4.0	3.8~4.2	6.4~25	0.35~6.5	5.4~8.0	5.4~12	○	○	○	○	○
	φ5.0	4.8~5.2	8.0~25	0.35~7	6.2~10	6.2~12	○	○	○	○	○
φ6.0	5.8~6.2	9.6~25	0.35~7.5	7.2~11	7.2~12	○	○	○	○	○	

\* Compatible with washer thickness 0.35 to 1.6 mm.

\* Dedicated for magnetized screws. Countersunk screws are not allowed.

Reference table of the specified screws							Screw head shape	
Screw feeder series	Screw size	Screw shaft diameter A(φ)	Screw shaft length B(mm)	Screw head thickness C(mm)	Screw head diameter D(φ)	Washer diameter E(φ)	No. 0 pan head	Pan head
SS-12 SSI-12M SSI-12R	φ1.0	0.9~0.95	1.6~10	0.35~1.0	1.8~2.0	-	○	
	φ1.2	1.1~1.15	1.9~10	0.35~1.0	1.8~2.3	-	○	
	φ1.4	1.3~1.4	2.2~10	0.35~1.0	2.0~2.5	-	○	
	φ1.7	1.6~1.7	2.7~10	0.35~1.0	2.5~3.0	-	○	
SS-23 SSI-23M SSI-23R	φ2.0	1.9~2.1	3.2~16	0.35~1.3	3.0~3.5	-		○
	φ2.3	2.2~2.4	3.7~16	0.35~1.5	3.5~4.0	-		○
	φ2.6	2.5~2.7	4.2~16	0.35~1.7	4.0~4.5	-		○
	φ3.0	2.9~3.1	4.8~16	0.35~2.0	5.0~5.5	-		○

\* Countersunk screws are not allowed.

Applicable Screw Reference Table							Screw head shape					
Screw feeder series	Screw nominal diameter	Screw shaft diameter A(φ)	Screw shaft length B(mm)	Screw head thickness C(mm)	Screw head diameter D(φ)	Washer diameter E(φ)	Pan head	Pan head			Bind	Counter-sunk
								Sems	Double sems	Washer head		
NJ NJR	φ2.0	1.8~2.1	3.2~18	0.5~5.5	3.0~3.5	3.0~8.0	○	○	○	○	○	○*1
	φ2.3	2.1~2.4	3.7~18	0.5~5.5	3.0~4.0	3.0~8.0	○	○	○	○	○	○*1
	φ2.6	2.4~2.7	4.2~18	0.5~5.5	3.6~4.5	3.6~8.0	○	○	○	○	○	○*1
	φ3.0	2.8~3.2	4.8~18	0.5~5.5	4.0~5.5	4.0~8.0	○	○	○	○	○	○*1
	φ3.5	3.3~3.8	5.6~18	0.5~8.0	4.8~8.0	4.8~12	○	○	○	○	○	○*1
	φ4.0	3.8~4.3	6.4~18	0.5~8.0	5.4~8.0	5.4~12	○	○	○	○	○	○*1
	φ5.0	4.8~5.2	8.0~18	0.5~8.0	6.2~10.0	6.2~12	○	○	○	○	○	○*1

\* Compatible with washer thicknesses from 0.4 to 1.0 mm.

\* 1 Special specification T046 recommended for NJ. (With screw guide for countersunk screws)

Screw feeder series	Applicable Screw Reference Table						Screw head shape					
	Screw nominal diameter	Screw shaft diameter A(φ)	Screw shaft length B (mm)	Screw head thickness C (mm)	Screw head diameter D (φ)	Washer diameter E (φ)	Pan head	Pan head			Bind	Counter-sunk
								Sems	Double sems	Washer head		
NJL NJRL	φ2.0	1.8~2.1	3.2~25	0.5~5.5	3.0~ 3.5	3.0~ 8.0	○	○	○	○	○	○*1
	φ2.3	2.1~2.4	3.7~25	0.5~5.5	3.0~ 4.0	3.0~ 8.0	○	○	○	○	○	○*1
	φ2.6	2.4~2.7	4.2~25	0.5~5.5	3.6~ 4.5	3.6~ 8.0	○	○	○	○	○	○*1
	φ3.0	2.8~3.1	4.8~25	0.5~5.5	4.0~ 5.5	4.0~ 8.0	○	○	○	○	○	○*1
	φ3.5	3.3~3.7	5.6~25	0.5~8.0	4.8~8.0	4.8~12	○	○	○	○	○	○*1
	φ4.0	3.8~4.1	6.4~25	0.5~8.0	5.4~8.0	5.4~12	○	○	○	○	○	○*1
φ5.0	4.8~5.1	8.0~25	0.5~8.0	6.2~10.0	6.2~12	○	○	○	○	○	○*1	

\* Compatible with washer thicknesses from 0.4 to 1.0 mm.

\* 1 Special specification T046 recommended for NJL. (With screw guide for countersunk screws)

Screw feeder series	Applicable Screw Reference Table						Screw head shape					
	Screw nominal diameter	Screw shaft diameter A(φ)	Screw shaft length B (mm)	Screw head thickness C (mm)	Screw head diameter D (φ)	Washer diameter E (φ)	Pan head	Pan head			Bind	Counter-sunk
								Sems	Double sems	Washer head		
FM-36 FME-36	φ3.0	2.8~3.2	4.8~25	1.0~5.5	4.0~ 5.5	4.0~ 8.0	○	○	○	○	○	○
	φ3.5	3.3~3.8	5.6~25	1.0~8.0	4.8~8.0	4.8~12.0	○	○	○	○	○	○
	φ4.0	3.8~4.3	6.4~25	1.0~8.0	5.4~8.0	5.4~12.0	○	○	○	○	○	○
	φ5.0	4.8~5.2	8.0~25	1.0~8.0	6.2~10.0	6.2~12.0	○	○	○	○	○	○
	φ6.0	5.8~6.3	9.6~25	1.0~8.0	7.2~12.0	7.2~12.0	○	○	○	○	○	○

\* Compatible with washer thicknesses from 0.5 to 1.6 mm.

### Reference table of the specified screws (Special specification)

\* Within the range of the screw sizes and lengths below, there may be unique screw shapes or structures that may not be compatible with the feeder unit.

If you use a tapping screw with a sharp point or a rough pitch, the wear may be severe.

It is desirable that the B dimension is larger than the D and E dimensions.

Screw size	Screw feeder model	Reference table of the specified screws							Screw head shape					
		Screw size	Screw shaft diameter A(φ)	Screw shaft length B (mm)	Screw head thickness C (mm)	Screw head diameter D (φ)	Washer diameter E (φ)	Washer thickness (mm)	Pan head	Pan head			Bind	Counter-sunk
										Sems	Double sems	Washer head		
NJ	NJ-4560(T003)	φ6.0	5.8~6.3	9.6~18	0.5~8.0	7.2~13	7.2~13	0.5~1.6	○	○	○	○	○	○
NJR	NJR-4560(T002)	φ6.0	5.8~6.3	9.6~18	0.5~8.0	7.2~13	7.2~13	0.5~1.6	○	○	○	○	○	○
NJRL	NJRL-4560(T090)	φ6.0	5.8~6.2	9.6~25	0.5~8.0	7.2~13	7.2~13	0.5~1.6	○	○	○	○	○	○
NSB	NSB-35(T048)	φ3.5	3.3~3.5	5.6~20	0.35~5.0	4.8~8.0	4.8~9.0	0.35~1.0	○	○	○	○	○	○
	NSB-40(T049)	φ4.0	3.8~4.0	6.4~20	0.35~5.0	5.4~8.0	5.4~9.0	0.35~1.0	○	○	○	○	○	○
NSR	NSR-35(T035)	φ3.5	3.3~3.5	5.6~20	0.35~5.0	4.8~8.0	4.8~9.0	0.35~1.0	○	○	○	○	○	○
	NSR-40(T036)	φ4.0	3.8~4.0	6.4~20	0.35~5.0	5.4~8.0	5.4~9.0	0.35~1.0	○	○	○	○	○	○
NSBI	NSBI-35(T177)	φ3.5	3.3~3.5	5.6~20	0.35~5.0	4.8~8.0	4.8~9.0	0.35~1.0	○	○	○	○	○	○
	NSBI-40(T178)	φ4.0	3.8~4.0	6.4~20	0.35~5.0	5.4~8.0	5.4~9.0	0.35~1.0	○	○	○	○	○	○
NSRI	NSRI-35(T132)	φ3.5	3.3~3.5	5.6~20	0.35~5.0	4.8~8.0	4.8~9.0	0.35~1.0	○	○	○	○	○	○
	NSRI-40(T133)	φ4.0	3.8~4.0	6.4~20	0.35~5.0	5.4~8.0	5.4~9.0	0.35~1.0	○	○	○	○	○	○
FM-36	FM-3626(T017)	φ2.6	2.4~2.7	4.8~25	1.0~5.5	3.6~ 4.5	3.6~ 8.0	0.5~1.6	○	○	○	○	○	○

### Notes:

•For screws that deviate from the guideline, please contact us with the screw drawings.

•Pointed tapping screws cannot be used for NJ, NJR, and FM series.

The NSB, NSR, NSBI, and NSRI series may be compatible with tapping screws as special specifications.

Please contact us using the model selection hearing form.

•For screws with the same screw shaft diameter and screw head thickness,

such as CAP bolts, it may be difficult to flow with standard products, so please contact us using the model selection hearing form.